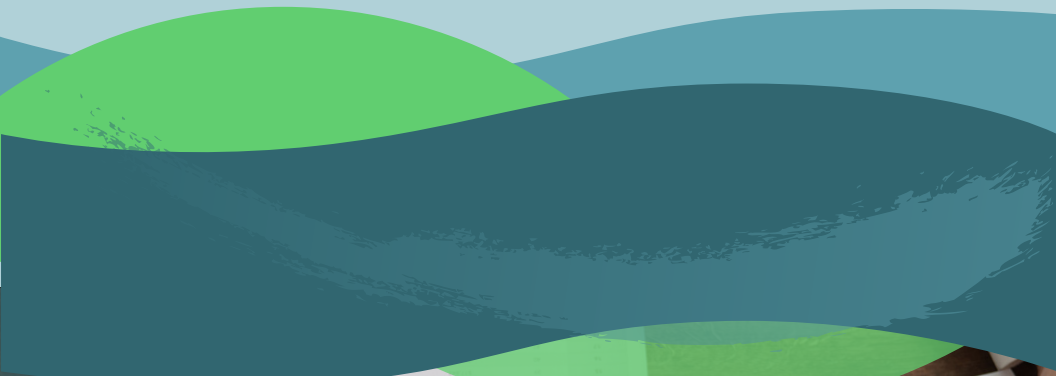




inHANCE

PowerManager®

Efficiency through utility business management software



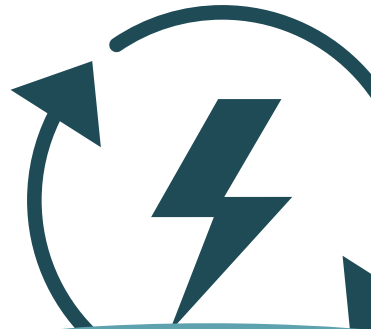
Account	Usage	Rate	Balance
1000000000	1000	0.10	100.00
1000000001	2000	0.10	200.00
1000000002	3000	0.10	300.00
1000000003	4000	0.10	400.00
1000000004	5000	0.10	500.00
1000000005	6000	0.10	600.00
1000000006	7000	0.10	700.00
1000000007	8000	0.10	800.00
1000000008	9000	0.10	900.00
1000000009	10000	0.10	1000.00





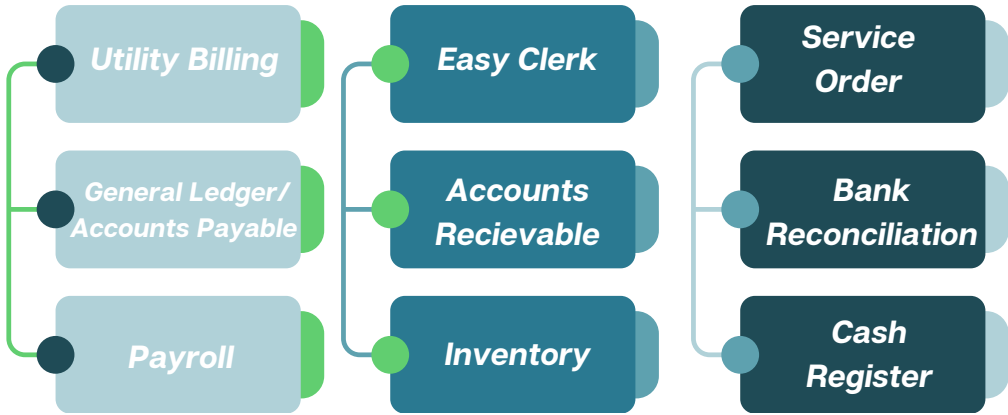
The PowerManager software originates from the collaboration between Salt Creek Software and the Nebraska Municipal Power Pool, situated in Lincoln, Neb. These two entities have functioned as allies since the late 1990s, effectively creating and supporting software solutions for the requirements of municipalities and utilities. Presently, PowerManager offers a collection of software applications tailored for municipalities and utilities, and its usage extends to approximately 190 such entities across the United States.

PowerManager® software is designed for seamless integration between programs to maximize efficiency. It also comes with top-of-the-line customer support!



inHANCE

PowerManager Products



Value Support Plan

In the realm of technology, particularly software, the process of creating a program and disseminating it is merely the beginning, as the endeavor to sustain and enhance the program is ongoing.

In the absence of updates and support, the product inevitably becomes outdated as technology progresses. The Value Support

Plan introduces a means of providing users with prompt and continuous assistance, in contrast to the conventional approach of offering a major annual upgrade for a core program. Within the framework of the Value Support Plan, participants make an annual payment and gain access to yearly upgrades for each program. Furthermore, the plan encompasses a customer support component. Whether an individual is making use of all the programs or just one, every user is ensured an annual upgrade.

Schedule Your Demo Today.

inHANCE

CONTACT US

